

CAN4F00SI

PCIe to 4-port Isolated CAN FD
Communication Card



Introduction

SUNIX CAN4F00SI, industrial PCIe to 4-port isolated high speed CAN FD communication card, is designed for Edge Computer that enables CAN FD and CAN bus data communication capability for electric vehicle industry application. This board built-in SUNIX Digital-I/O controller, **QiuNiu**, and also built with many of SUNIX advanced features and technologies. In addition, SUNIX provides SocketCAN driver, allowing users to program under Linux operating systems. SUNIX CAN4F00SI card enriches CAN/ CAN FD interface expandable capacity; it is the best CAN bus communication solution for electric vehicle and AVG/AMR applications.

Features

- Designed to meet PCI Express Base Specification Revision 2.1.
- Equipped with high reliable SUNIX **QiuNiu** controller.
- Complies with CAN specifications 2.0B and FD
- CAN FD bit rates for the data field up to 8 Mbit/s
- Isolation on the each CAN channel up to 2.5KV
- Surge protection up to 2KV
- Plug-n-Play, I/O address and IRQ assigned by system.
- Support proprietary SocketCAN driver, allowing users to program under Linux operating systems.

Specifications

Board Level

Interface	PCI Express
Controller	SUNIX QiuNiu controller
BUS	PCI Express Gen2 x 1 (single Lane)
IRQ & IO	Assigned by System
ESD Protection	±15KV IEC61000-4-2 Air Gap Discharge ±8KV IEC61000-4-2 Contact Discharge

CAN Communication

Type	CAN 2.0 / CAN FD	Channel	4-channel
Isolation	2500 VDC	Arbitration bit rate	1 Mbit/s
Pin Define	CAN H, CAN L, GND	Data bit rate	8 Mbit/s
Termination	120Ω Configured by Software		
PCB Connector	DB44 Female		

Software Support

Linux	Linux 5.x
Driver	SocketCAN

Declaration

Green Product	RoHS, WEEE
----------------------	------------

Regulatory Approvals

Hardware	CE / FCC / VCCI / BSMI
-----------------	------------------------

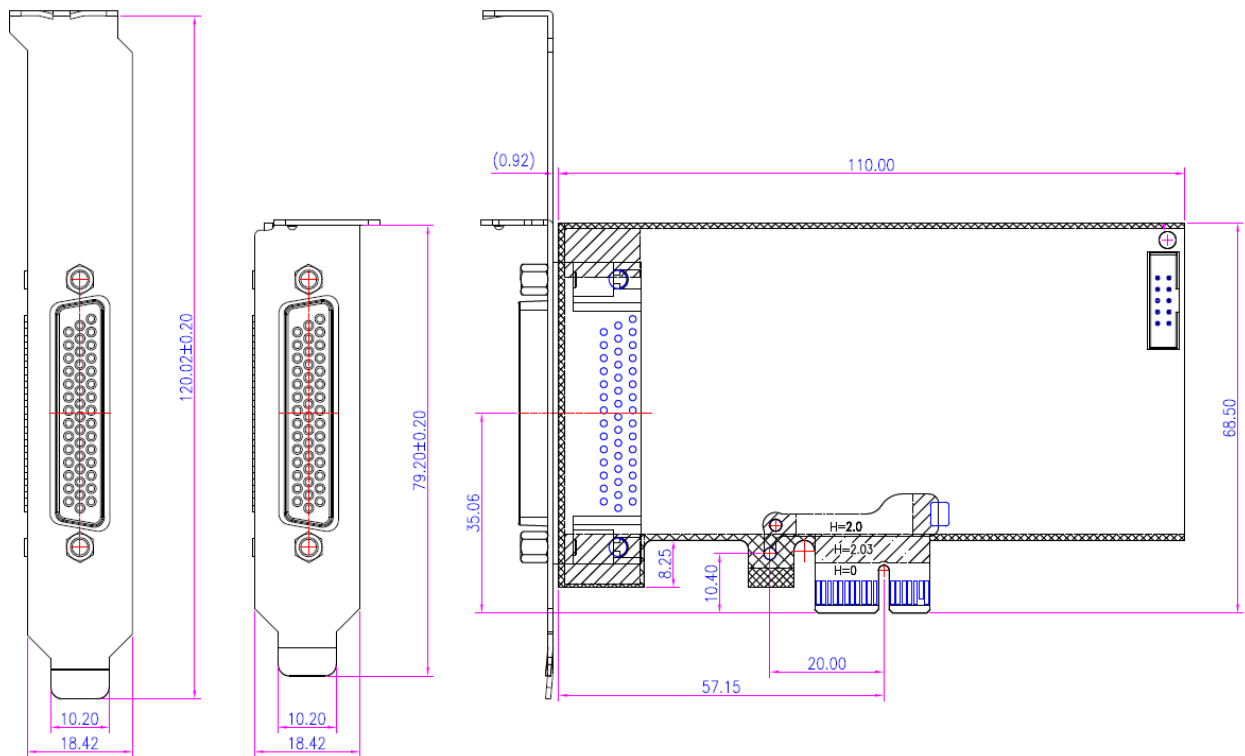
Environment

Operation Temperature	-20 to 70°C (-4 to 158°F)
Operation Humidity	5 to 95% (non-condensing)
Storage Temperature	-20 to 85°C (-4 to 185°F)

Dimension

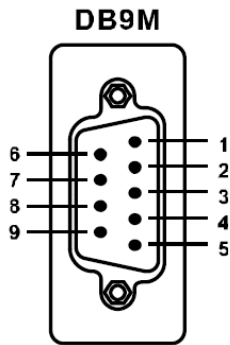
PCB Dimension	110 x 68.5mm
Bracket	Full Height 120 mm / Low Profile 79.2mm
Bracket Space	1

Unit : mm



Pin Assignment

■ CAN interface



PIN	Signal
1	-
2	CAN L
3	GND
4	-
5	-
6	GND
7	CAN H
8	-
9	-

Package

- CAN4F00SI PCIe to 4-port Isolated CAN FD Communication Card
- DB44 to 4-port DB9 Male Connection Cable