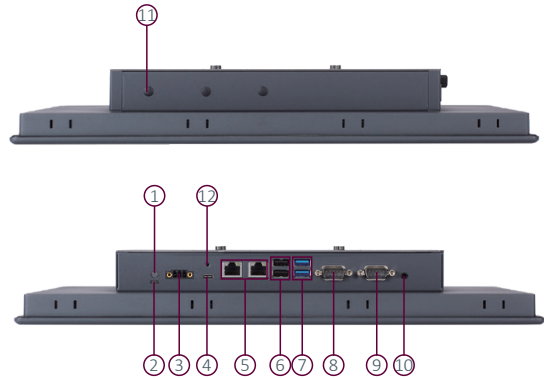


GOT115A-TWL-WCD NEW

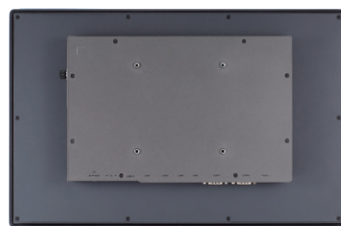
15.6" WXGA TFT Fanless Touch Panel Computer with Intel® Processor N150



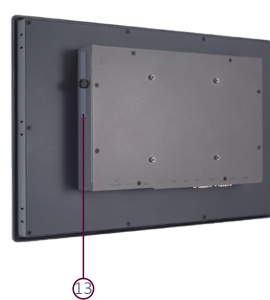
1. Power button
2. AT/ATX switch
3. DC power input
4. USB Type-C
5. 2 x 2.5GbE LAN
6. 2 x USB 2.0
7. 2 x USB 3.2 Gen 2
8. COM 1 (RS-232/422/485)
9. COM 2 (RS-232)
10. Audio
11. 3 x antenna hole
12. Lock hole for Type-C port
13. 2.5" SATA SSD storage
14. Flexible I/O Window



▲ Side view



▲ Rear view



13



14



Fanless



Low Power



LPDDR5



AiRD



IP65



Type-C Display Output



EAPI



2.5GbE

Features

- 15.6" WXGA TFT LCD, 400 nits with LED backlight, PCAP
- Fanless design with Intel® N-series N150 (Twin Lake), onboard 8GB LPDDR5 memory
- 2 LAN, 4 USB, 1 USB Type C, 2 COM, and 1 Line-out
- Front bezel IP65 & rear cover IP30
- AT/ATX mode selectable via hardware switch
- Supports M.2 2242/2280 M-key (PCIe Gen 3 x2 NVMe), mSATA, and Wi-Fi (6E/7) or 4G LTE
- Supports removable 2.5" SATA SSD storage
- Supports Flexible I/O Window
- Operating temperature: -10°C to +50°C
- Supports panel mount, wall mount, VESA, and desktop stand



Introduction

The GOT115A-TWL-WCD is a 15.6" WXGA TFT fanless touch panel PC powered by the Intel® N150 processor (Twin Lake). Featuring an ultra-slim and lightweight design, it supports an extended operating temperature range from -10°C to +50°C, ensuring reliable performance in demanding environments.

With IP65-rated front bezel protection and MIL-STD-810H compliance, the GOT115A-TWL-WCD delivers exceptional durability and stability. It offers flexible storage options, including NVMe and mSATA, supports wireless connectivity via Wi-Fi 6E/7 or 4G LTE, and provides versatile I/O interfaces with four USB ports, one Type-C port, two Ethernet ports, and two COM ports.

Its fanless and energy-efficient design makes the GOT115A-TWL-WCD an ideal solution for space-constrained applications such as factory automation, machine control, and information display systems.

Specifications

Front Bezel	IP65, NEMA 4 rugged protection, metal front bezel	
LCD Panel	Display Type	15.6" WXGA TFT LCD with LED backlight 15.6" FHD TFT LCD with LED backlight (option)
	Brightness (cd/m ²)	400 nits
	Resolution	1366 x 768
	Viewing Angle (H/V)	170°/160°
Main System	CPU	Intel® processor N150 4 cores (up to 3.6 GHz)
	System Memory	Onboard 8GB LPDDR5 (16GB by option)
	BIOS	AMI UEFI BIOS
	Storage	1 x M.2 Key M 2242/2280 (PCIe Gen 3 x2 NVMe) 1 x mSATA supported via full-size mini PCIe slot (shared) 1 x 2.5" SATA SSD (swappable HDD tray)
	Watchdog Timer	65536 levels, 0 to 65535 sec.
	Onboard Graphics	Intel® UHD Graphics
	I/O Connector	1 x RS-232/422/485 1 x RS-232 2 x 2.5GbE Ethernet (I226-V, supports UEFI PXE boot and LAN wake-up, w/o TSN) 2 x USB 3.2 Gen 2 2 x USB 2.0 1 x USB Type-C (Gen 2 x1, 10Gbps, 5V/3A output, DP 1.4) 1 x power input via 3-pin terminal block connector 1 x power button 1 x AT/ATX DIP switch 1 x Line-out 1 x flexible I/O window (optional)
TPM	TPM 2.0	
Expansion Interface	1 x M.2 E Key 2230 for wireless (PCIe & USB 2.0) 1 x full-size mini PCIe slot (PCIe/SATA +USB) 1 x Nano SIM card slot	
Touchscreen	Projected capacitive multi-touch	
Power Supply	9 to 36 VDC (typ. 12/24 VDC)	
Power Consumption	53W (Measured under full system loading with LCD on and peripherals connected)	
Dimensions (W x D x H)	409.2 x 56.6 x 265.2 mm (16.11" x 2.22" x 10.44")	
Packing Dimensions (W x D x H)	533 x 222 x 463 mm (20.98" x 8.74" x 18.23")	
Weight (net/gross)	4.5 kg (9.92 lbs)/6.2 kg (13.67 lbs)	
Operating Temperature	-10°C to +50°C (+14°F to +122°F)	
Relative Humidity	10% to 95% @ +40°C, non-condensing	
Shock & Vibration	Vibration (operating): MIL-STD-810H, Method 514.8, Category 20, and Figure 514.8C-2 Shock (operating): MIL-STD-810H, Method 516.8, Table 516.8-I, and Procedure I	
Certifications	CE Class A, IEC/EN 61000-6-4, IEC/EN 61000-6-2 (heavy industrial grade)	
	UKCA	
	FCC 47 CFR Part 15 Subpart B (Class A) RoHS standard	

Ordering Information

Standard

GOT115A-TWL-WCD (P/N: E22B115A00)	15.6" WXGA 400 nits fanless touch panel computer with Intel® processor N150, onboard 8GB LPDDR5, projected capacitive multi-touch screen, 9 to 36VDC power input via 3-pin terminal block connector
--------------------------------------	---

* Other configuration by request

* Specification and certifications may vary based on different requirements

Packing List

1 x GOT115A-TWL-WCD

Optional Accessories

Wi-Fi + Bluetooth kit

E29R131112	Panel mount kit
E29R131115	Wall mount kit
E226171119	Stand kit
E392902103	AX92902 full-size PCI Express Mini module with Gigabit LAN
E392903102	AX92903 full-size PCI Express Mini module with CAN bus
E392906101	AX92906 full-size PCI Express Mini module with 2 COM
E392918103	AX92918 full-size PCI Express Mini module with 2 Gigabit LAN
509000005500	Adapter 60W/24V FSP060-DAAN3

Optional OS Installation

Windows® 11, Windows® 11 IoT, and Linux

Dimensions

